

Desensitizer for Hypersensitive Teeth

MS Coat One



RELIEVE DENTIN HYPERSENSITIVITY
RELIABLE QUALITY
EXTREMELY EASY TO USE

MS Coat ONE

Desensitizer for
Hypersensitive
Teeth



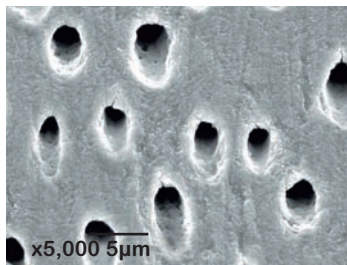
www.sunmedical.co.jp

MS Coat One

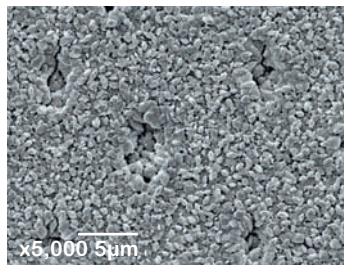
Just dispense from a single-bottle and apply.
That's all there is to it.
Provides immediate relief.

RELIEVE DENTIN HYPERSENSITIVITY

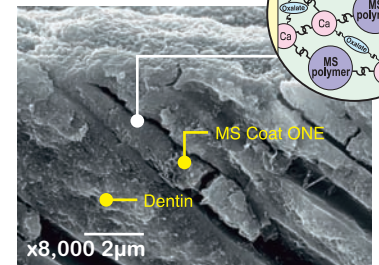
MS Coat ONE is designed to relieve hypersensitivity. The unique MS polymer chemically reacts with tooth structure to form a barrier that seals open tubules and blocks thermal, mechanical and chemical stimulation of the odontoblastic process.



Dentinal tubules before application of MS Coat ONE.



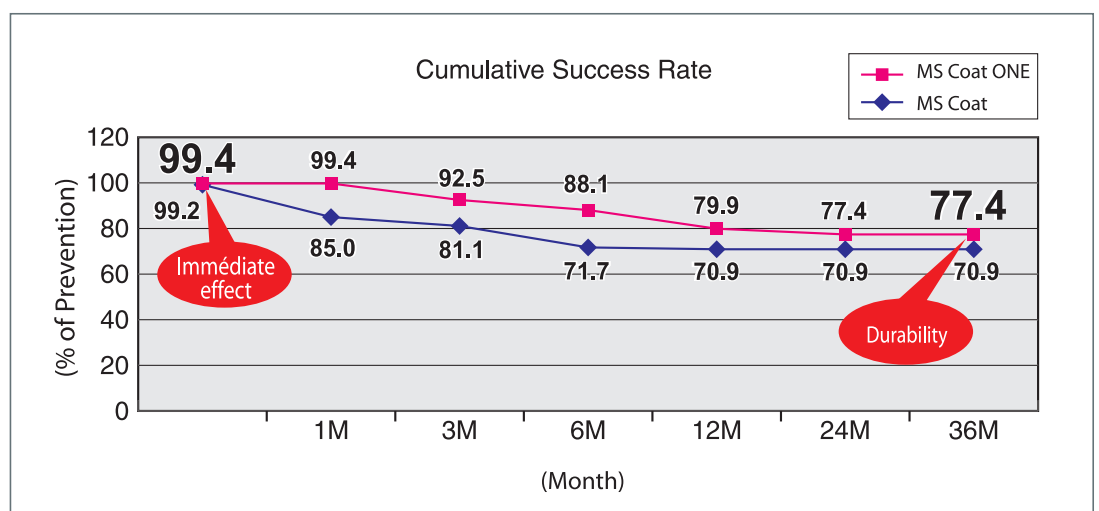
Dentin surface after application. The MS polymer film contains calcium oxalate crystals that seal the dentinal tubules.



Cross-section of dentin surface. The MS polymer tags have sealed open tubules.

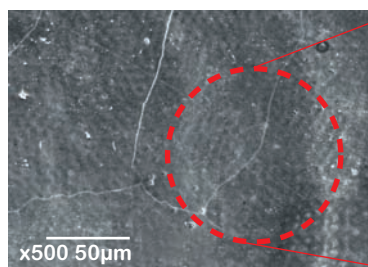
Immediate, long-lasting relief

In a clinical study, MS Coat ONE was applied to hypersensitive teeth using a rubbing motion. Sensitivity was then evaluated using a blast from an air-syringe. MS Coat ONE provided immediate relief hypersensitivity in 99.4% of the cases, 77.4% of the cases remaining asymptomatic after 3 years.

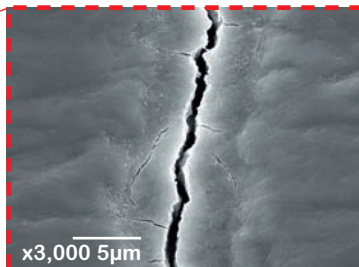


Prevention of Hypersensitivity during Tooth Bleaching

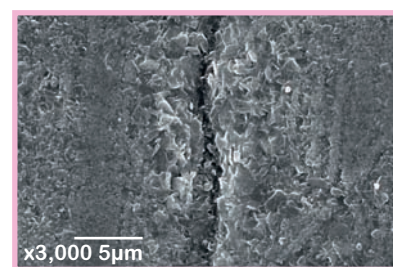
Simply apply MS Coat ONE before or after bleaching to prevent post-operative hypersensitivity. The barrier it creates seals the enamel without reducing the bleaching effect and will not subsequently discolor.



The enamel surface is characterized by invisible microcracks that encourage discoloration.



Bleaching treatment removes the discoloration, but the microcracks remain, allowing painful exogenous stimulation to dentin.



Enamel surface after application. The MS polymer blocks the microcracks, preventing stimulation.

EXTREMELY EASY TO USE

The Felt Applicator is designed for access to hard-to-reach subgingival and interproximal areas. Simply saturate the Felt Applicator and gently rub the hypersensitive surfaces.



Felt Applicator.



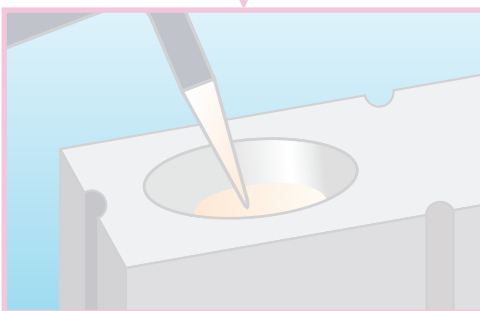
Clinical case 1
Easy access to interproximal, cervical, and supragingival areas.



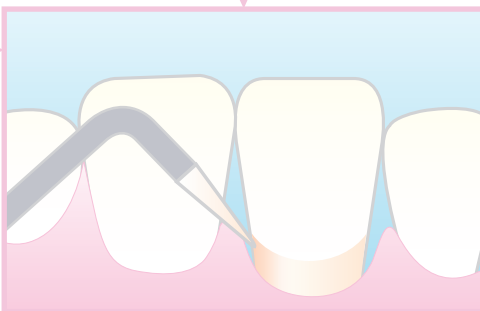
Clinical case 2
To treat large surfaces, expand the tip of the Felt Applicator, then saturate with MS Coat ONE.

CLINICAL PROCEDURE

Clean the tooth surface



Saturate Felt Applicator with MS Coat ONE



Apply MS Coat ONE with the Felt Applicator for 30 seconds using a pumping / rubbing motion



Dry with air-syringe

Rinse

Completed

If the surface remains painful, you can repeat the treatment (rub with the saturated applicator and air-dry) 2 or 3 times at the same appointment

Contents of the kit			
1. MS Coat ONE	5 ml	3. Felt Applicator	100
2. Felt Holder	1	4. Plastic Dispensing Dishes...	20

Exclusive distributor



GENERIQUE INTERNATIONAL

77/79 rue Pierre BROSOLETTÉ • 93160 NOISY LE GRAND
Tel. +33 1 43 03 06 84 • Fax +33 1 43 03 15 98

E-mail : generinter@aol.com - Web : www.generiqueinternational.com

Made in Japan by



571-2 Furutaka-cho, Moriyama,
Shiga, 524-0044, Japan
Phone:81-77-582-9981 Fax:81-77-582-9984
<http://www.sunmedical.co.jp>