

Self-Etching Resin-Based Sealer

Hybrid Root SEAL

4-META Adhesion to Work in Your Endo Fills



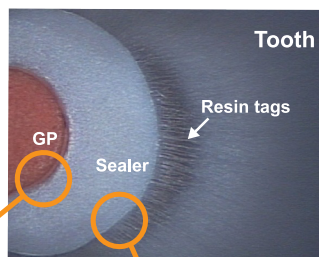
- ★ Self-etch formula hybridizes the canal walls to prevent leakage
- ★ Bonds to common gutta percha
- ★ Creates an instant coronal seal
- ★ Remarkable biocompatibility

Hybrid Root SEAL is extremely easy to use
Just mix 1 scoop of power + 3 drops of liquid



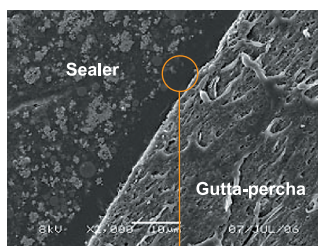
Compatible with all cold obturation techniques ...any conventional point

Hybrid Root SEAL penetrates the gutta percha to create a hybrid bond. The strength of this bond exceeds the cohesive strength of the point.



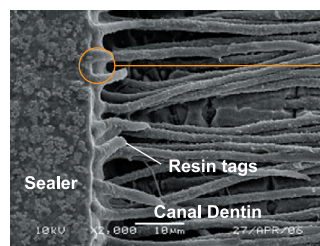
Formation of hybrid layer

The self-etching formula renders the sidewalls highly permeable to the 4-META resin. So the monomer penetrates down the tubules and into the intertubular and peritubular dentin. Then the hydrophilic Hybrid Root SEAL concentrates at the moist dentin where our special polymerization initiator can cure. As the sealer continues to cure, material is drawn toward the canal wall. The resulting resin-reinforced-layer (hybrid layer) is highly polymerized and gap-free.

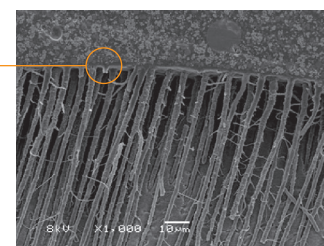


Resin-impregnated layer

High bond strength due to the resin-impregnated layer

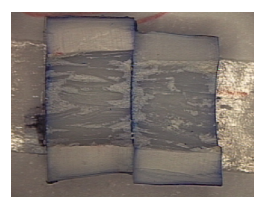


Hybrid layer



Excellent sealing ability and durability

After filling the canal, you can light-cure the Hybrid Root SEAL to create an instant coronal seal. This tough, light-cured scab resists leakage during the provisional period. Within the canal Hybrid Root SEAL self-cures slowly. This allows excellent flow during polymerization and avoids shrinkage stress and gapping.



[Dye penetration test: EDTA/NaClO - 60 s/60 s 5000 cycles of thermal stress]

Made in Japan by

 **SUN MEDICAL**

571-2, Furutaka-cho, Moriyama, Shiga, 524-0044, Japan
Phone: 81-77-582-9981 Fax: 81-77-582-9984
<http://www.sunmedical.co.jp>